

Every space is seen





REJAN
DEVELOPMENTS



Our journey started **10 years ago**
in South Cairo and has since
expanded to the heart of New Cairo.

10 Years of experience
in development

+2500 Units

+70 Projects

Every corner, every space

and every experience is created **to be seen**





• More than

30 PROJECTS
BEIT ALWATAN

• More than

25 PROJECTS
NEW NARGES

• More than

10 PROJECTS
NORTH ALREHAB

• More than

15 PROJECTS
SOUTH CAIRO

• More than

3 PROJECTS
ALANDALUS

• More than

3 PROJECTS
EL LOTUS

70 PROJECTS
PLAZA MALL



**A place that invites
you to look inside,**





Revealing a world of endless possibilities

with everything visible, every moment is within reach



seen.

Social District



Behind The --- Seen

The concept conveys the idea of visibility and presence.

It suggests that the project is not just a place you go to, but a place where you are noticed. This aligns with the idea that the project design and location make it impossible to miss.

Location Is Seen

The prime location of **SEEN** is truly exceptional featuring a front-facing view along Gamal Abdel Nasser Axis.

This important axis which connect between Ring road and bin Zayed Axis



The most important roads and main axis length

20 Km

- 90th North

17 Km

- 90th South

20 Km

- Gamal Abdel Nasser Axis

7 Minutes

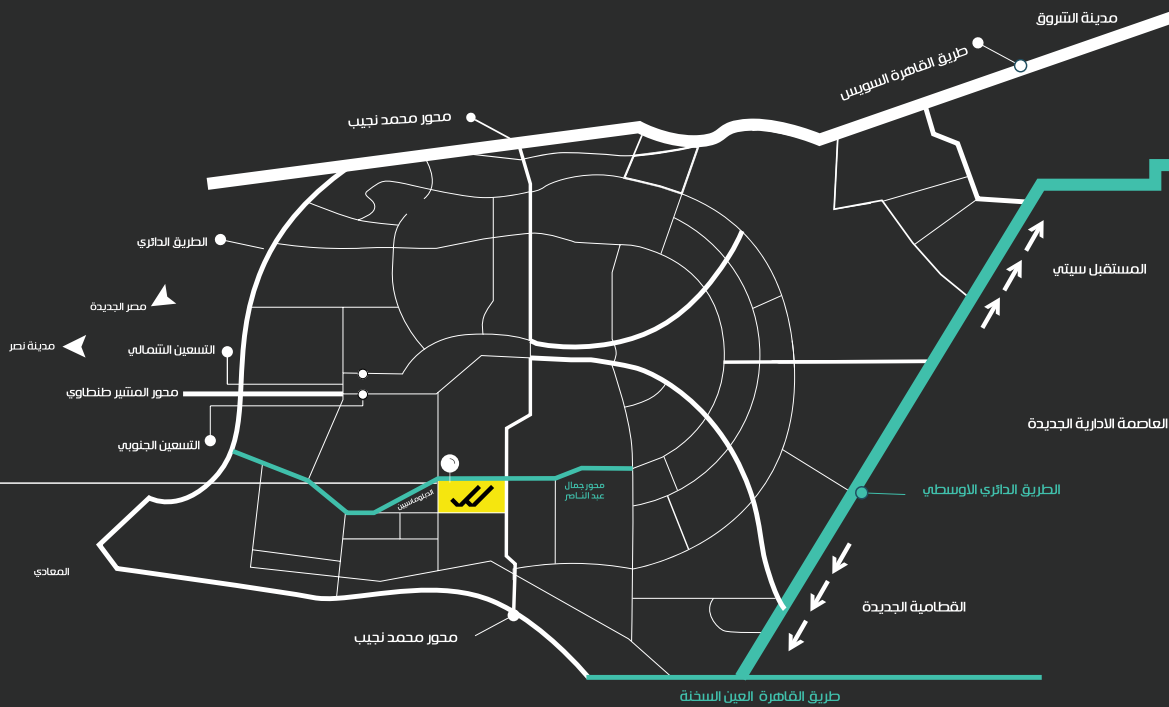
From the ring road

8 Minutes

From Ain Sokhna Road



Population density in the area



- New Narges

1,600 Projects

- Narges Buildings

695 Buildings

- Narges Villas

2,579 Villas

- Diplomats Compound
- Arabella Compound
- Katameya Creeks Compound
- GUC

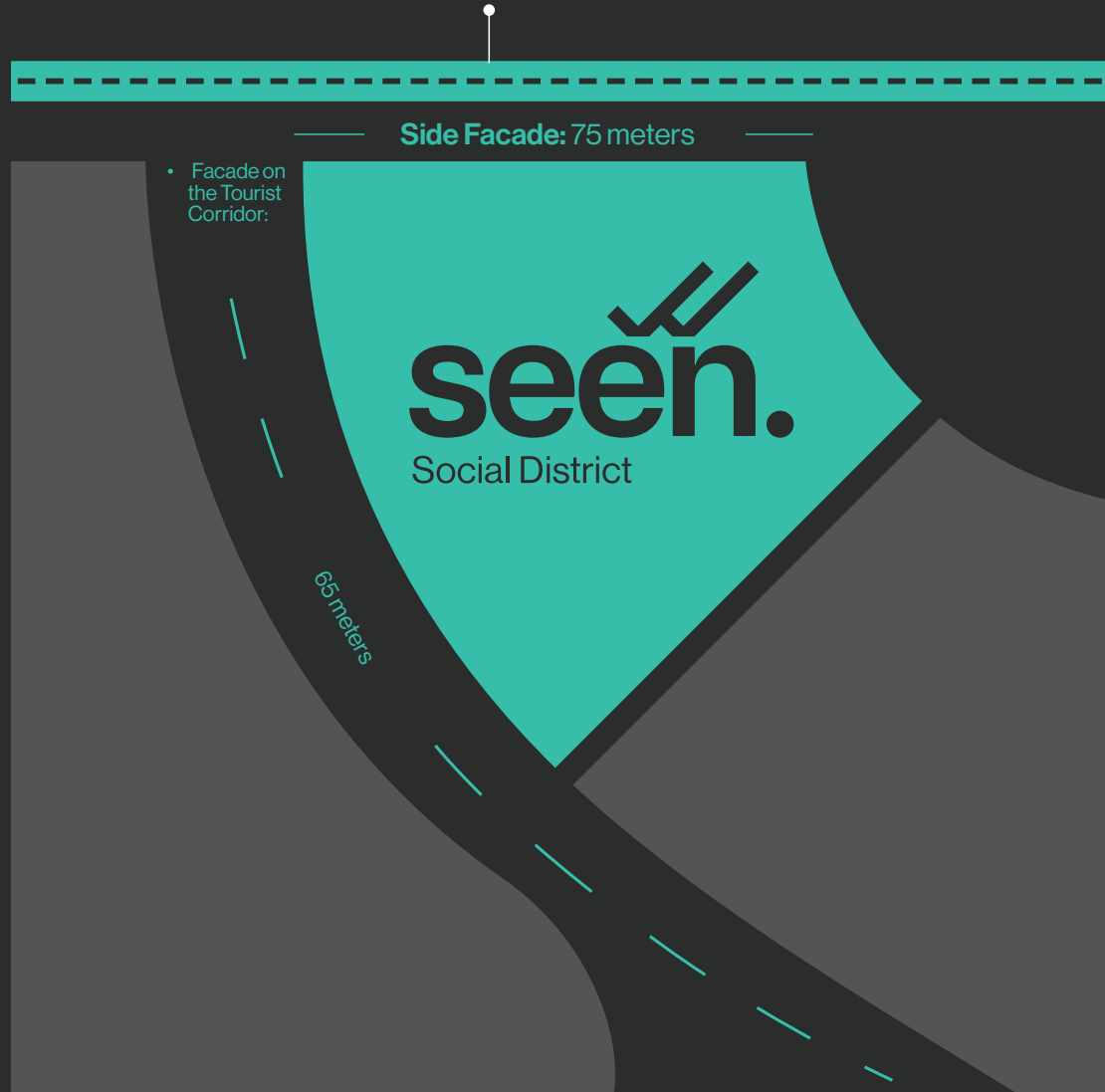
what you see is only the beginning,

and being seen is everything.

Watch them, see you

This design allows you to enjoy the panoramic view of everything happening outside while you're inside.

محور جمال عبد الناصر



The project features a striking front-facing view along Gamal Abdel Nasser Axis, with distinctive side facades overlooking the Champs-Élysées. This creates a dynamic interaction between the interior and exterior.

Retail, Offices, Clinics





EVERY SPACE IS SEEN



2 Basements

(Parking)





EVERY SPACE IS SEEN



- **Lower Ground**
- **Ground Floor**
- **1st floor** (Retail)

Spaces start from (35m)

PROJECT TYPE

RETAIL

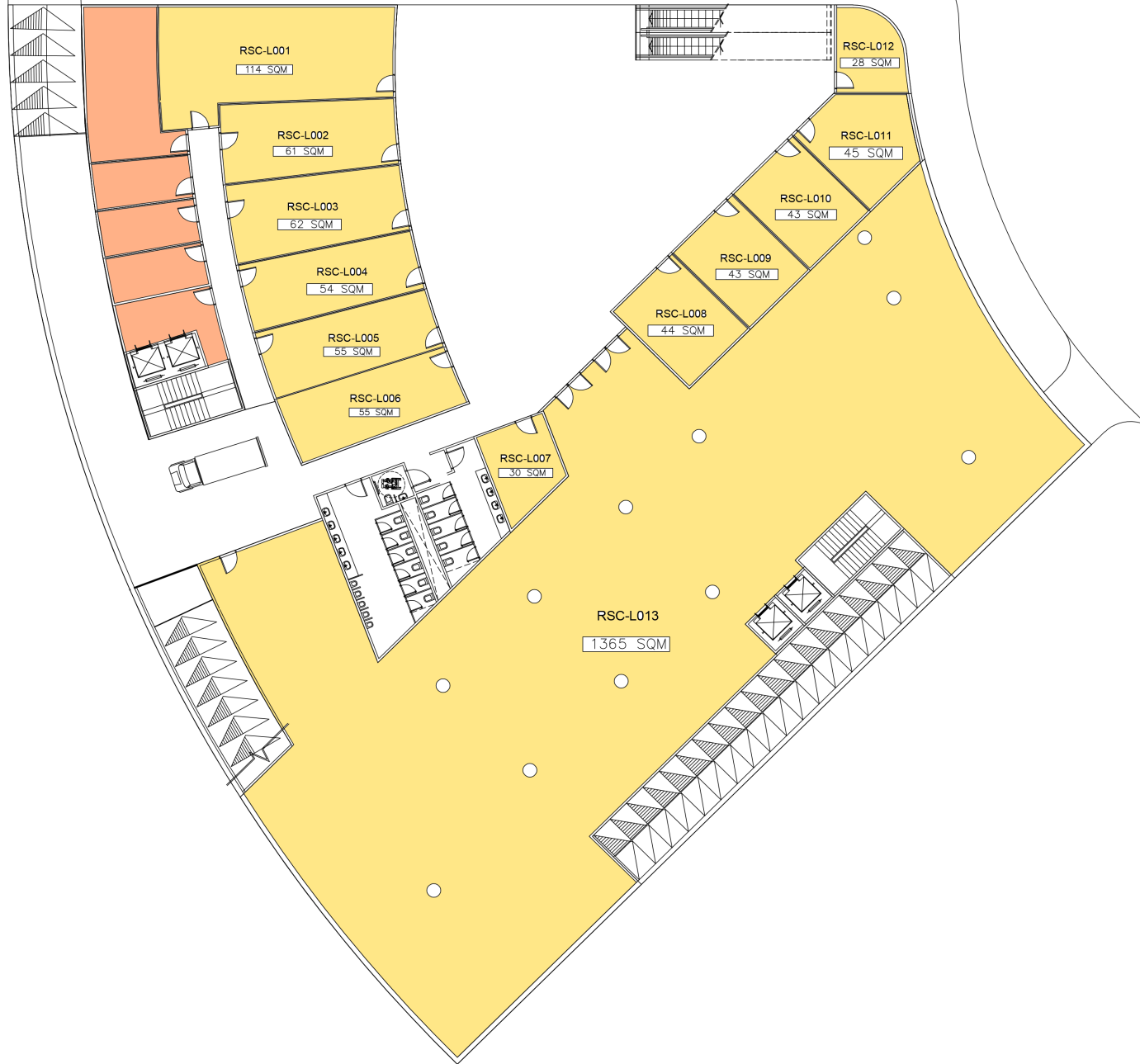


El7a2iiii, I got this cool
T-shirt from seen ✓✓



- **Lower Ground**
(Market-Food court)

Spaces start from **(35m)**





- **Ground Floor**

Spaces start from **(35m)**





• 1st Floor

Spaces start from **(35m)**





AOSHE

MAZAO

AL

BEURBE

ORA

FLOWL&CHILI

Retail, Offices, Clinics



MONO

REJANEG.COM

34

KEE



KEE

market

Ma



EVERY SPACE IS SEEN



Second floor

(Offices)

Spaces start from **(35m)**





-Where is the meeting?

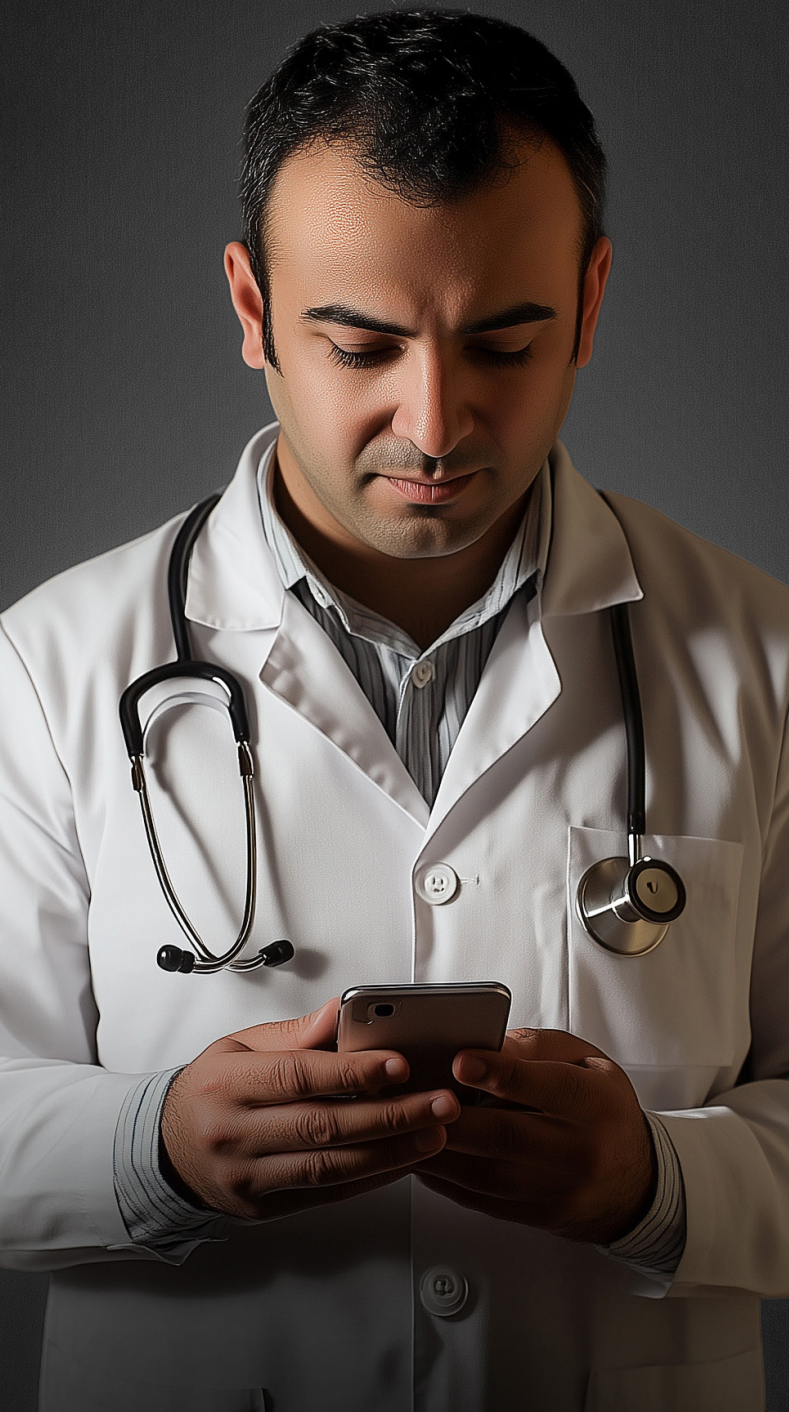
-it's...right here, where every space is seen ✓✓



Second & Third floor

(Clinics)

Spaces start from **(35m)**



You ok? Come to my clinic
if you feel sick, iam waiting
you at seen ✓✓



EVERY SPACE IS SEEN



EVERY SPACE IS SEEN





Retail, Offices, Clinics

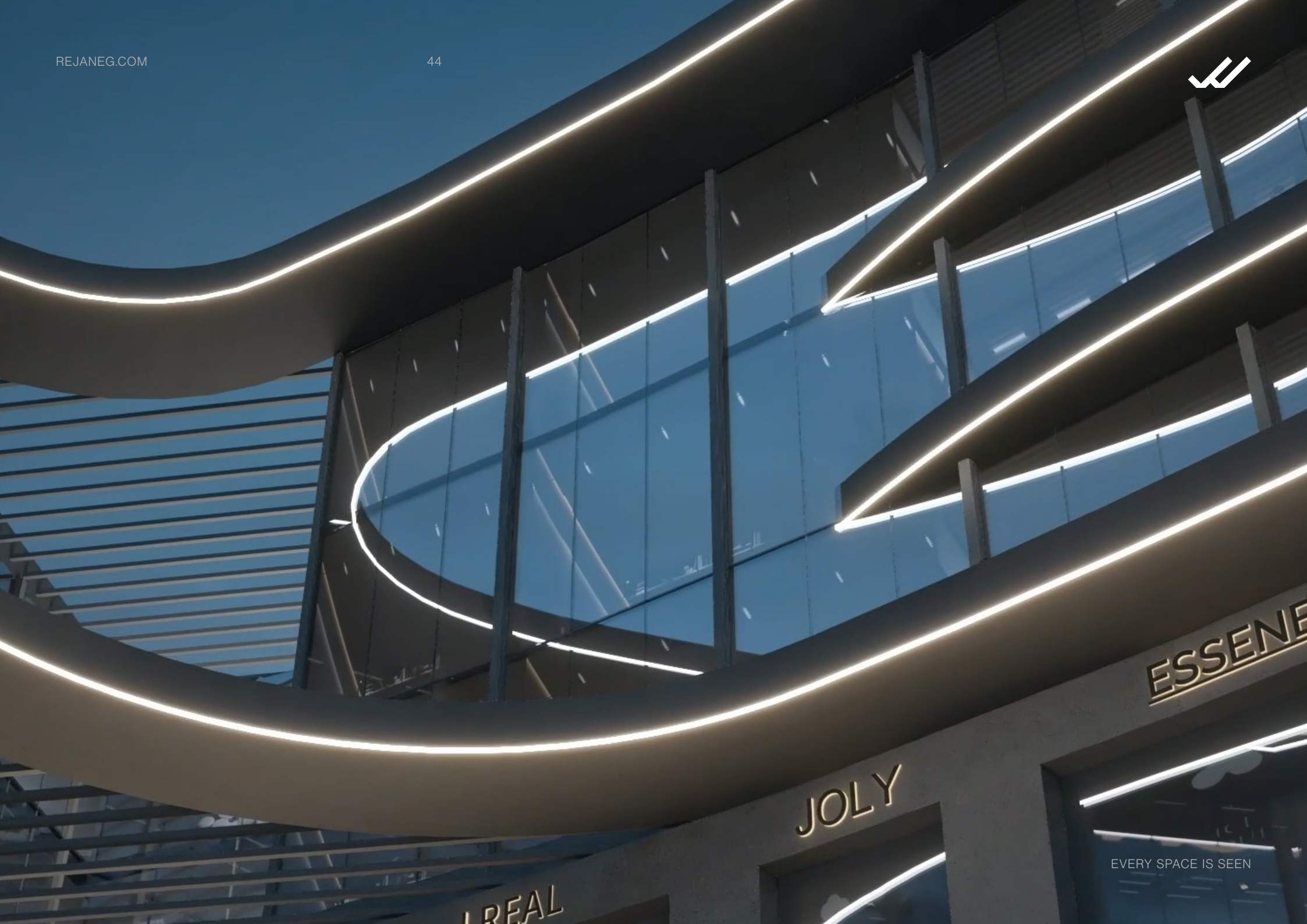
EVERY SPACE IS SEEN

Project Spaces

• Commercial start from **(35m)**

• Administrative start from **(35m)**

• Medical start from **(35m)**



ESSENCE

JOLY

REAL

EVERY SPACE IS SEEN

Nothing goes
unnoticed.



**(Facilities
& Amenities)**

EVERY SPACE IS SEEN

Facilities & Amenities

You can see a range of exceptional facilities designed for convenience and functionality.





The commercial areas are strategically placed for visibility, ensuring they can be easily seen by passersby. Additionally,

the administrative offices and medical spaces are equipped with modern amenities, creating an inviting atmosphere for all who visit.





Security 24/7



Escalator



Fountain



**Elevator for
admin units**



Plaza



Food Court



Hyper Market



**Elevator for
Medical units**



**Property
Management**



**Facility
Management**



**Marketing
screen**

Project Consultants

**Engineering Consultant
(Moharram Backhoum)**



**Marketing Agency
(AZ STUDIOS)**



**Architectural Consultant
(Smarch)**



**Management and Operation
(KAD)**



**Marketing and Financial
Study Consultant
(Etqan)**



**Administrative Development
and Restructuring Consultant
(kelma)**



Hotline : 16097

Website: www.rejaneg.com

E-mail : info@rejaneg.com

Location: Epic mall, St North 90, 4th & 5th floors

See and be seen!